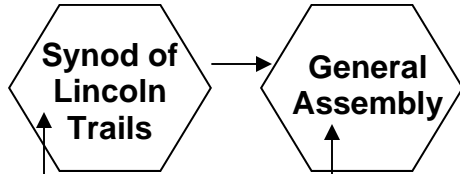


# Proposed Presbytery Structure

## Larger Church

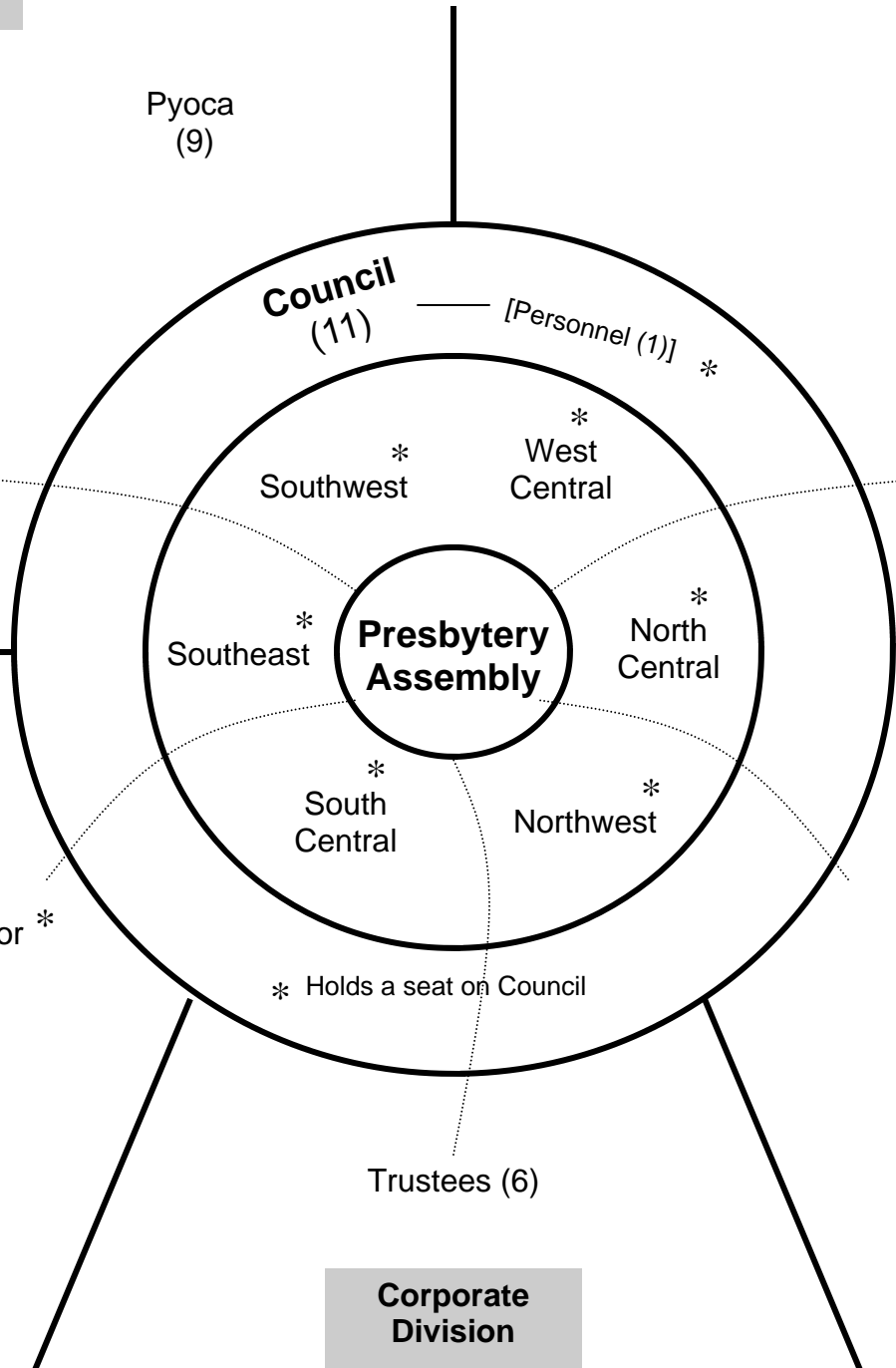
## Ecclesial Division



Commissioners  
SOLT (4) GA (2+YAD)

Pyoca  
(9)

- COM (13)
- CPM (7)
- LPC (6)
- Nominating (6)
- PJC (9)
- Representation (1)



- Moderator \*
- Vice-Moderator \*
- Immediate Past Moderator \*
- Moderator of Council \*

- Missional Presbyter
- Stated Clerk
- Treasurer

## Officers, Staff

## Corporate Division

- Church Planting (3)
- Church Transformation (3)
- Leadership Institute (1)
- Mission Partnership (1)
- Response (1)
- Stewardship (1)
- Task Forces & Teams

## Witness & Mission Support Division